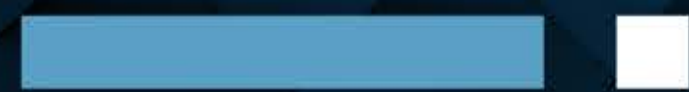


# EVOLVE™

T O W E R

[ntg-development.com](http://ntg-development.com)

**new point  
of view**





## ■ Our Story

New Town Group is one of the leading real estate developers in Egypt.

**NTE** proved its proficiency as a top-notch real estate developer over the past 30 years through building more than 100 diverse projects ranging from commercial to administrative and residential.

**NTE** projects are distinguished by their elegant architectural designs utilizing all of the spaces, using the best construction materials and the latest technologies. Besides the commitment to deliver projects on time based on its solvency and the experience of professionals.

Complementing the long years of experience and success,

**NTE** is expanding in new markets to have a vital role in executing the strategic plan of the Housing Ministry to build new cities, chief among them the New Administrative Capital city. Besides our plan to expand building new mixed-use, projects all over Egypt.





# ABOUT US

## Who are NTG's board members?

NTG Board members consist of a group of investors with an extended, diversified investment portfolio, especially in the real estate industry. They have been among the pioneer's real estate developers by establishing unique real estate projects since 1995, also, investments in transport, tourism, import, and export, agricultural, pharmacies management, and contracting.

## What are NTG's investments portfolio?

New Town Group has a varied portfolio besides real estate developments as it also works in transport, where it has been operating for the last 15 years, owning an empire of buses providing group transport.

Also, the group owns a company in agricultural investment, established in 2000. The company follows the latest methods and technical capabilities in irrigation, agriculture, and land reclamation and selects engineering cadres and various land all over Egypt.





**Ezzat Azmy Haroun**  
CEO

Engineer Ezzat Azmy Haroun is one of the experts in investment management and real estate development since 1990. During his years leading the New Town Group, he supervised the implementation of more than 100 residential projects in (The Fifth Settlement, EL Obour, Heliopolis, AL-Ahram Gardens, Sheraton and the 6th of October).

In addition to developing several commercial malls and administrative buildings that have achieved a tremendous success rate. He also owns a vast portfolio of projects including a resort in Hurghada, a company in public transportation, agricultural investment sector and more.



**Eng Naser Gad Alkareem**  
Vice-Chairman

Engineer Nasser Gad Al-Karim held several leadership positions in many real estate development companies.

In addition to his experience in supervising NTG's buildings and construction, which exceeded 30 years, he supervised residential and industrial projects in (the 6 October City, AL-Ahram Gardens, and AL-Obour City). He also developed several commercial malls. Outstanding architectural designs and distinctive locations distinguished it.

## CEO Speech

"Since we started our journey, the real estate market has shifted towards a luxurious and dynamic development in construction. We always maintain our success in achieving the highest return on investment.

Accordingly, we adhere to our core values by producing vibrant designs and infrastructure - sustainable development, leading to a more stimulating atmosphere in every investment.

Finally, credibility and integrity are our mottoes in every step along the way to ensure our successful track record to our clients."

CEO  
*Ezzat Haroun*



## ■ Our Values

### Credibility and Integrity

Our customers are the cornerstone of any success we achieve. Hence the integrity and credibility with our customers over the past 30 years are the most important values we adhere toward. We are always ensuring our customers implement everything agreed upon and deliver on deadlines to maintaining our extended relation with our clients.

### Quality

Quality is our core value! Besides choosing the best construction and finishing materials, we establish our new projects after a long journey of conducting research, studying the location, and contracting with the pioneer consultants to guarantee the highest ROI to our clients.







# EVOLVE.

TOWER

Unparalleled, fully integrated mixed-use tower overlooking the tallest skyscraper in Africa and the most renowned landmark in The New Administrative Capital City .



## Why the New Administrative Capital city?

The New national venture is the destination now for the real estate investment! A smart city built to offer a futuristic vision of the quality-of-life Egyptians deserve. Over a few years and as a consequence of the great attention from the Egyptian Government. The city proved that it is a turning point in Egypt's economy and history.



## Why the CBD?

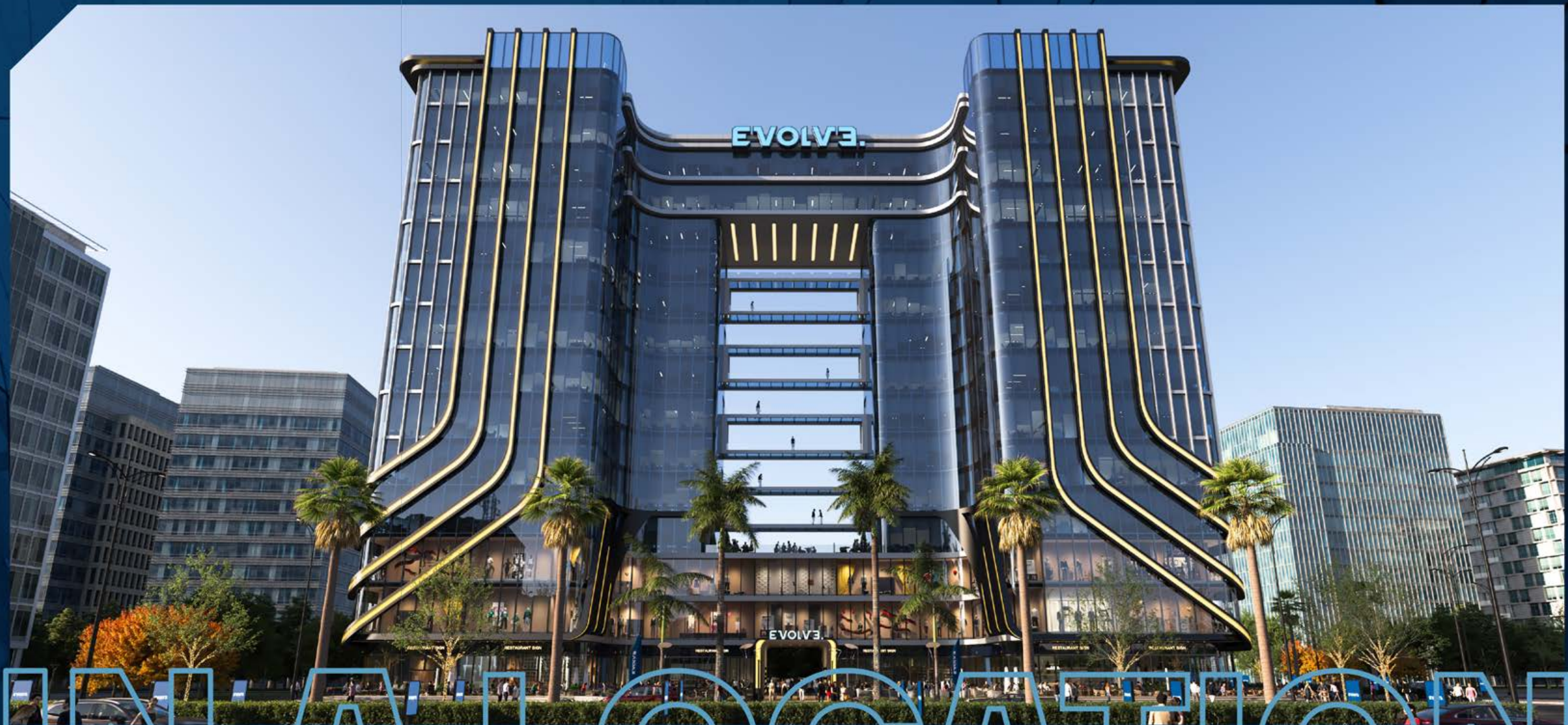
The CBD is a preeminent commercial and administrative center expanding over 1.700.000 Square meters in the midpoint of the New Capital city. The CBD district is surrounded by several key roads:

- From the south Mohammed Ben Zayed Axis.
- From the North the Central Axis.
- From the west Al-Amal Axis.
- Infront of R2 and R3 residential district.
- Facing the Iconic Tower.





**THE ULTIMATE  
VALUE IN A LOCATION**





Mostakbal City

# EVOLVE.<sup>™</sup>

TOWER

National Ring Road

Presidential Palace

International Air Port

P1

R1

R2

R3

Fatah Alim Mosque

Opera

Financial District

Governmental District

Cabinet

Masa Hotel

Monorail Station

CBD

Downtown

P2

R4

R5

R6

Medical City

Expo City

Green River

R8

Arts & Culture

Ring Road





EVOLVE.

## ■ ABOUT

# EVOLVE™

TOWER

A unique 14 floor mixed-use tower in one of the most promising districts; The CBD!

Evolve tower offering integrated services from commercial stores, medical clinics, to administrative offices in a vibrant design that connects you with the future.

The tower is ground level plus 13 floors including a 4-floor commercial area with a vibrant atmosphere, utilizing smart spaces for smooth movement and business operation evolve was studied thoroughly to optimize any commercial project success rate.



## ■ Our Prime Location

In one of the most premium locations inside the CBD where you are stepping only few minutes away from the Green River and the Iconic tower! The most renowned landmarks in the New Capital!

Our location gives us the privilege of four open street corners, and beautifully landscaped passages gratify you with an ultimate panoramic view.

80

Meters Street

40

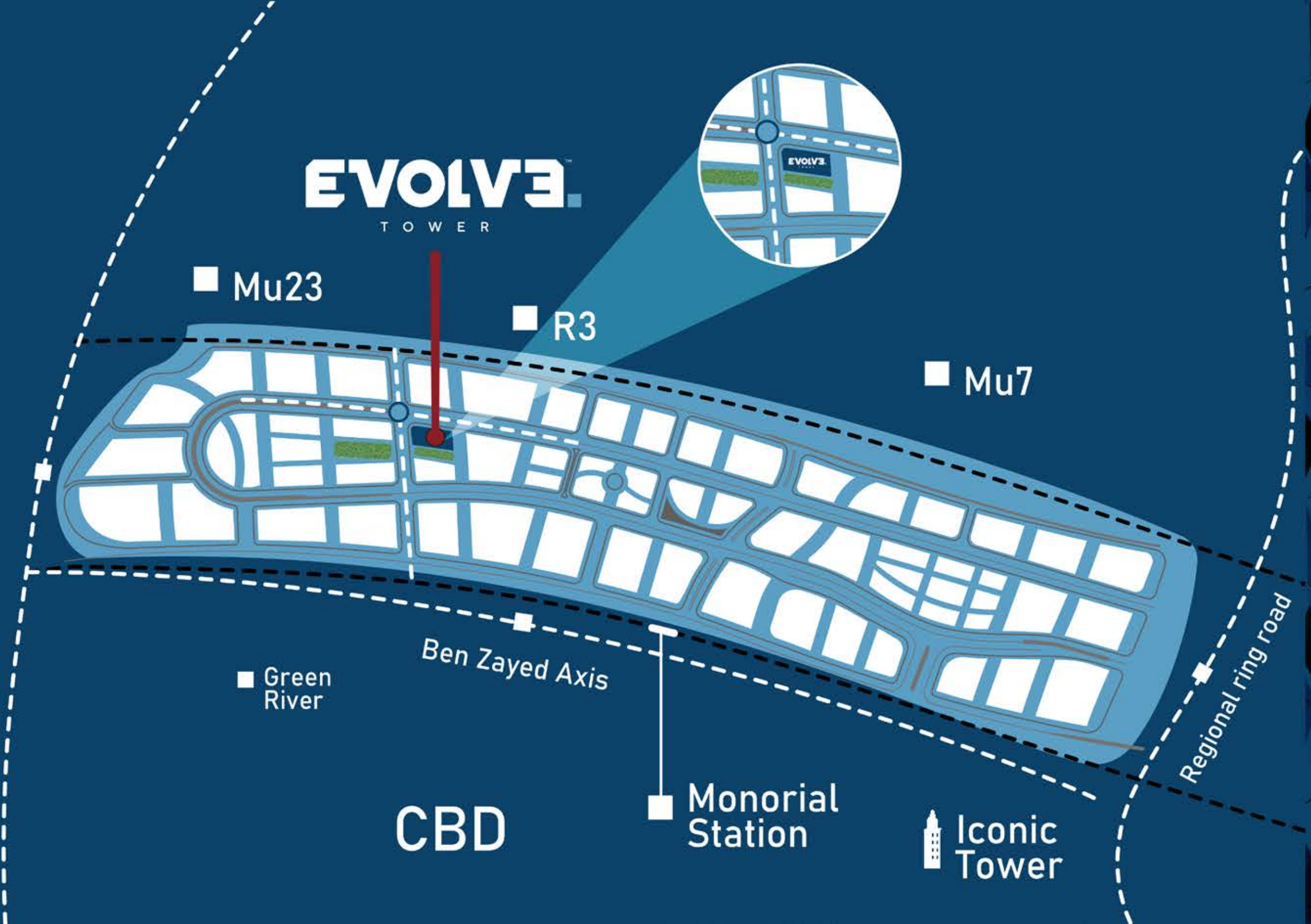
Meters Landscaped Passage

42

Meters Street With Garden View

36

Meters Landscaped Passage

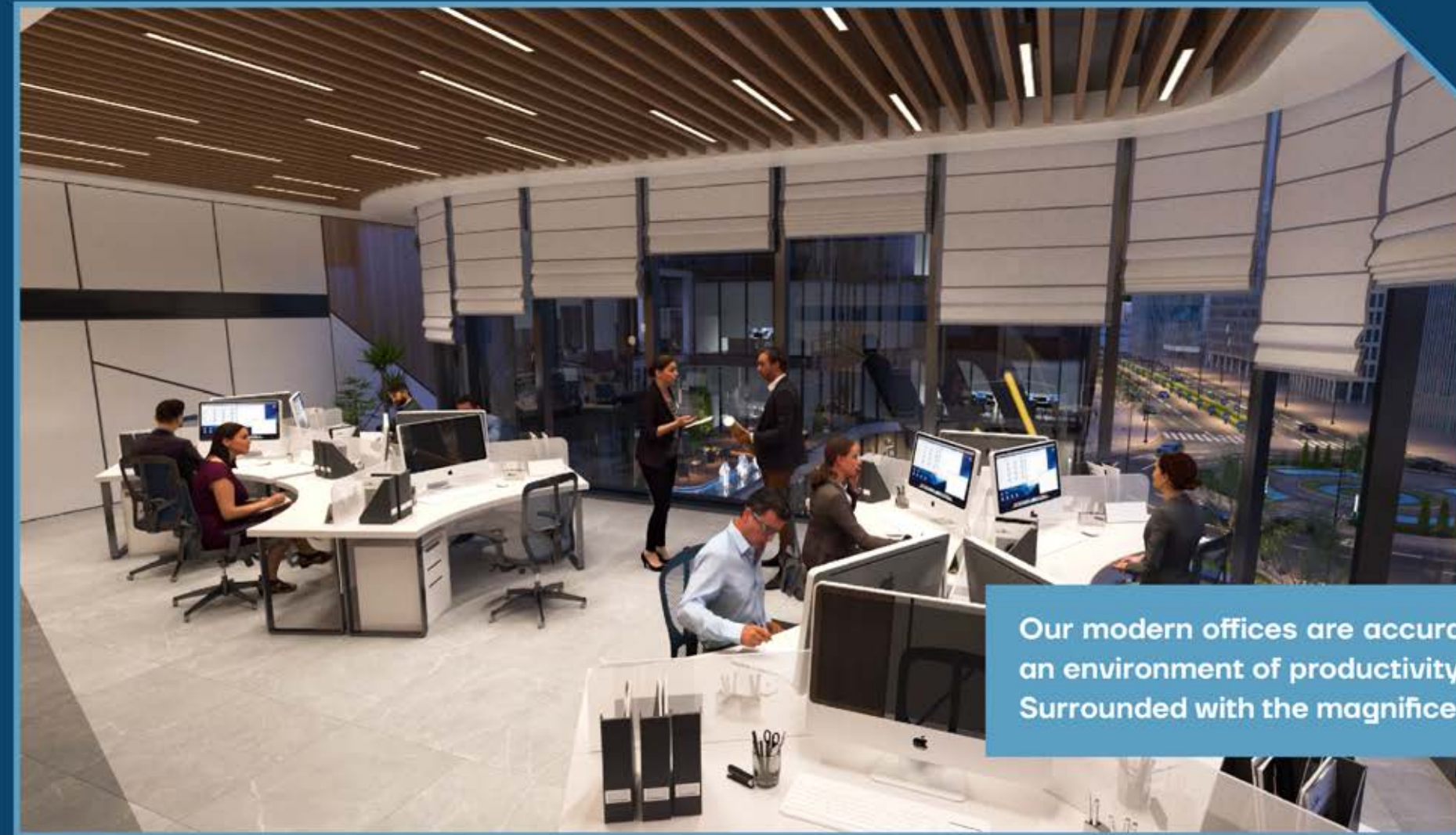






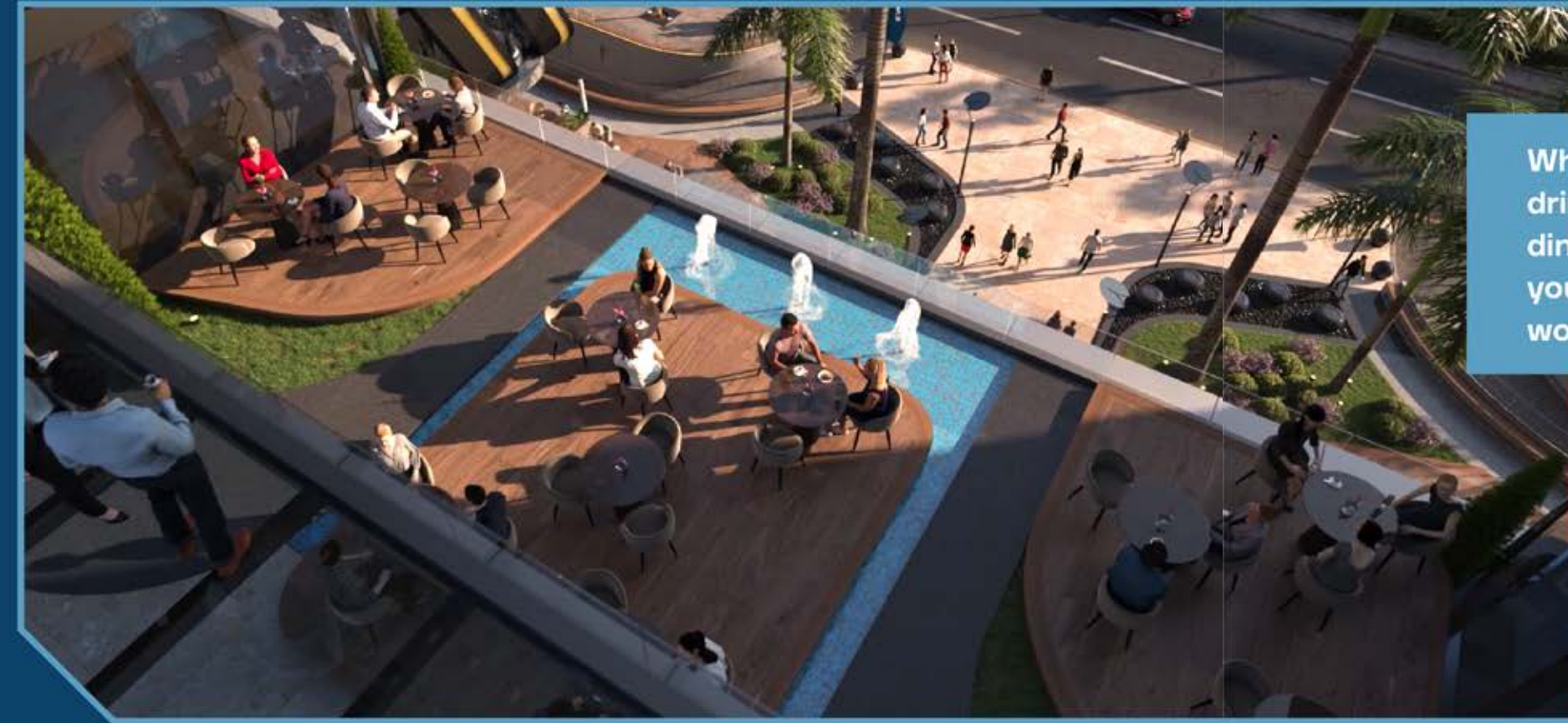
## ■ The Ultimate Contemporary Design

A proactive architectural design is planned to envelop the highest quality of professional offices, matchless medical services, luxurious retail shops, and panoramic restaurants with panoramic views. THE ULTIMATE SUCCESSFUL WORK ENVIRONMENT.



Our modern offices are accurately designed to be an environment of productivity and prosperity! Surrounded with the magnificent panoramic views.





What's better than having your meal or drink in a panoramic view restaurant? Our dining venues are designed to gratify you with the ultimate joy after a long day working or shopping!

We offer you the ultimate shopping experience with various retail shops with up-scale brands that satisfy all your needs!



Our medical spaces are designed to offer comprehensive medical services. The cutting-edge facilities will guarantee the highest quality of medical care experience.







**VIBRANT DESIGN  
CONNECTS YOU  
WITH THE FUTURE**

EVOLVE.

RESTAURANT SIGN

RESTAURANT SIGN

RESTAURANT SIGN

W0  
001





# OUR PARTNERS ■

## ■ Ultimate Value With Great Partners!

Since we are committed to offer you the best quality!  
We consulted the leading companies in the New Capital city.



# KAD

Commercial Property Management  
Malls & Retail Integrated Solutions

## **KAD- Commercial Property Management**

KAD is commercial property management that provides consultancy services to commercial properties. KAD oversees all development phases of your property ranging from proactive studies of the land to achieving the highest returns on investment by identifying merchandise choices appropriate for the mall based on the location, supply, and demand



## **Moharram Bakhoom – Engineering Consultant**

ACE is one of the oldest, largest, and most experienced multi-disciplinary engineering consultancy companies currently operating worldwide. We offer services in multi-disciplinary tasks in the fields of planning, design, project management, and construction supervision - the entire range of construction-related activities.



## **Egypro – Facility Management**

Egypro FME, a subsidiary of Wadi Degla Developments, is a Facility Management and Engineering Services since 2002. During the last 20 years, Egypro FME has successfully created a complete portfolio of day-to-day facility management services, which ensures covering all our clients' scope. Our dedicated teams thrive to expand our comprehensive scope of integrated facility management services through continuous technical and business development.



## **Etqan –Our Strategic Partner**

Etqan is the first consultant for the New Capital developers, with extensive experience across 10 countries! Etqan has achieved more than 16 success stories in the New Capital city in the last year as a commercial and financial consultant.



## **Archrete Designs -Architecture Consultant**

Archrete is one of the Egypt's leading architectural firms established in 2015. Through the past years, Archrete succeeded in having a massive portfolio of bold, intelligent, aesthetic architecture in sectors as diverse as culture. Residential, leisure, infrastructure, mixed-use, commercial, and large-scale master planning.





EVOLVE

RESTAURANT SIGN

RESTAURANT SIGN

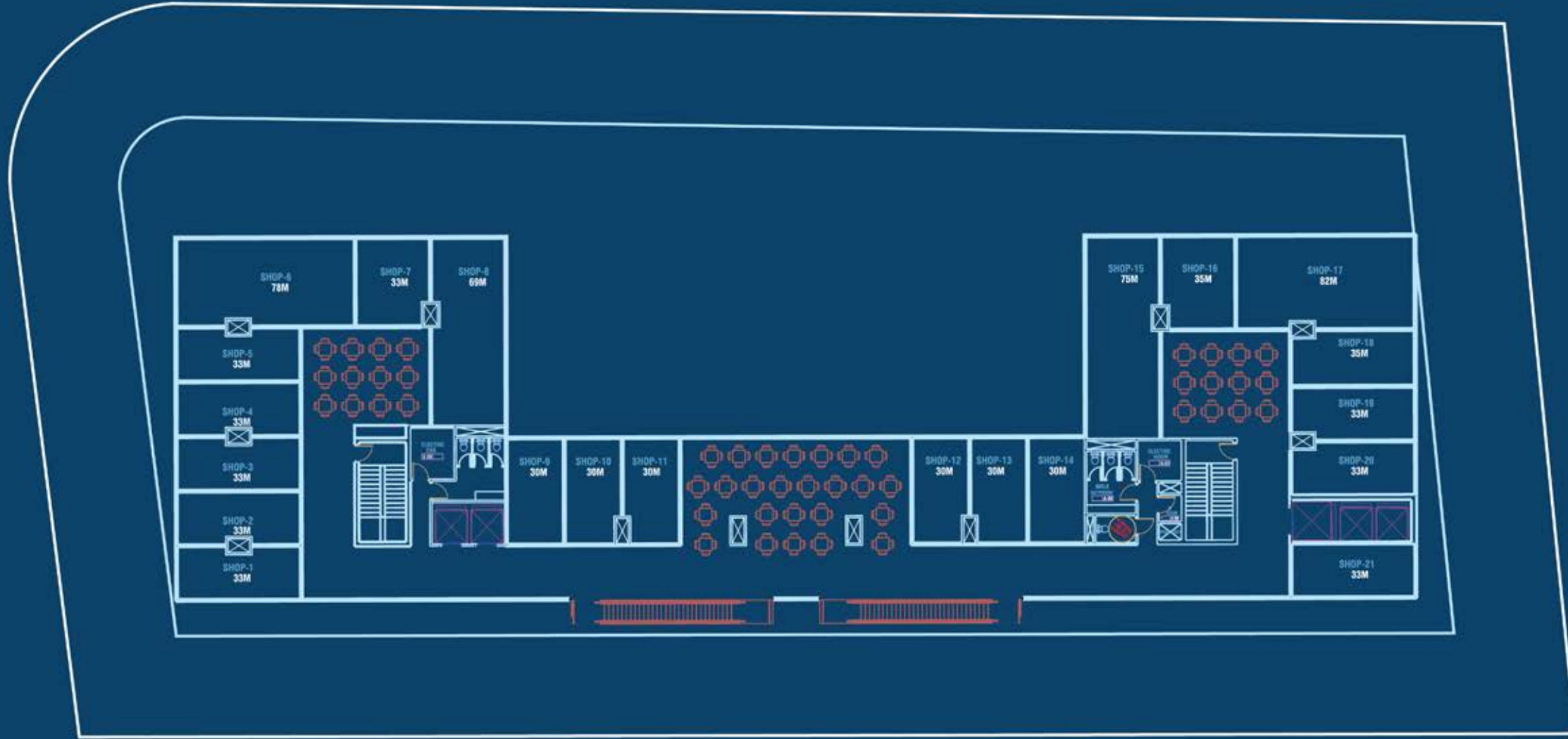
COMMERCIAL







COMMERCIAL COMMERCIAL COMMERCIAL COMMERCIAL COMMERCIAL COMMERCIAL COURT FOOD COURT FOOD COURT FOOD COURT FOOD COURT



**FOOD COURT**





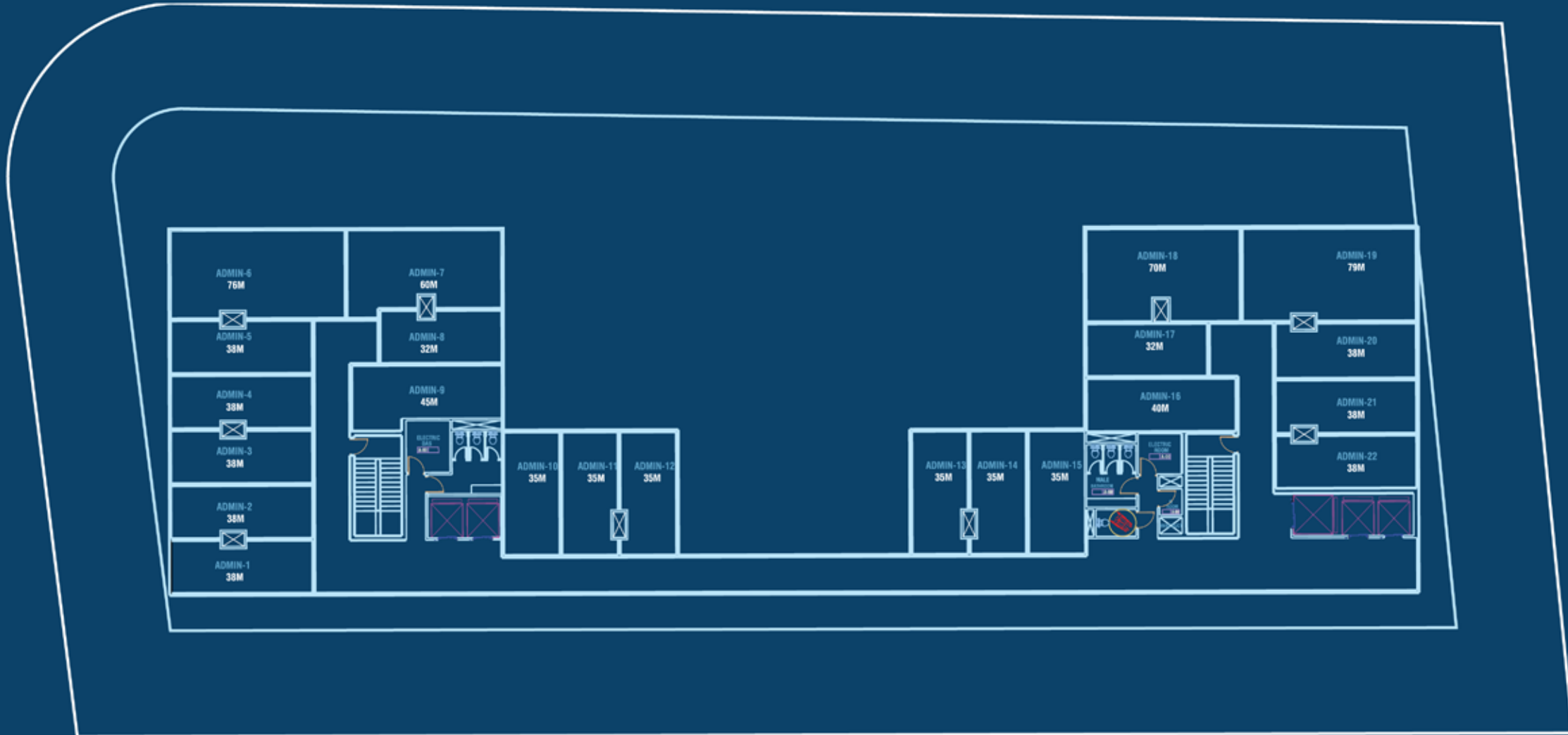




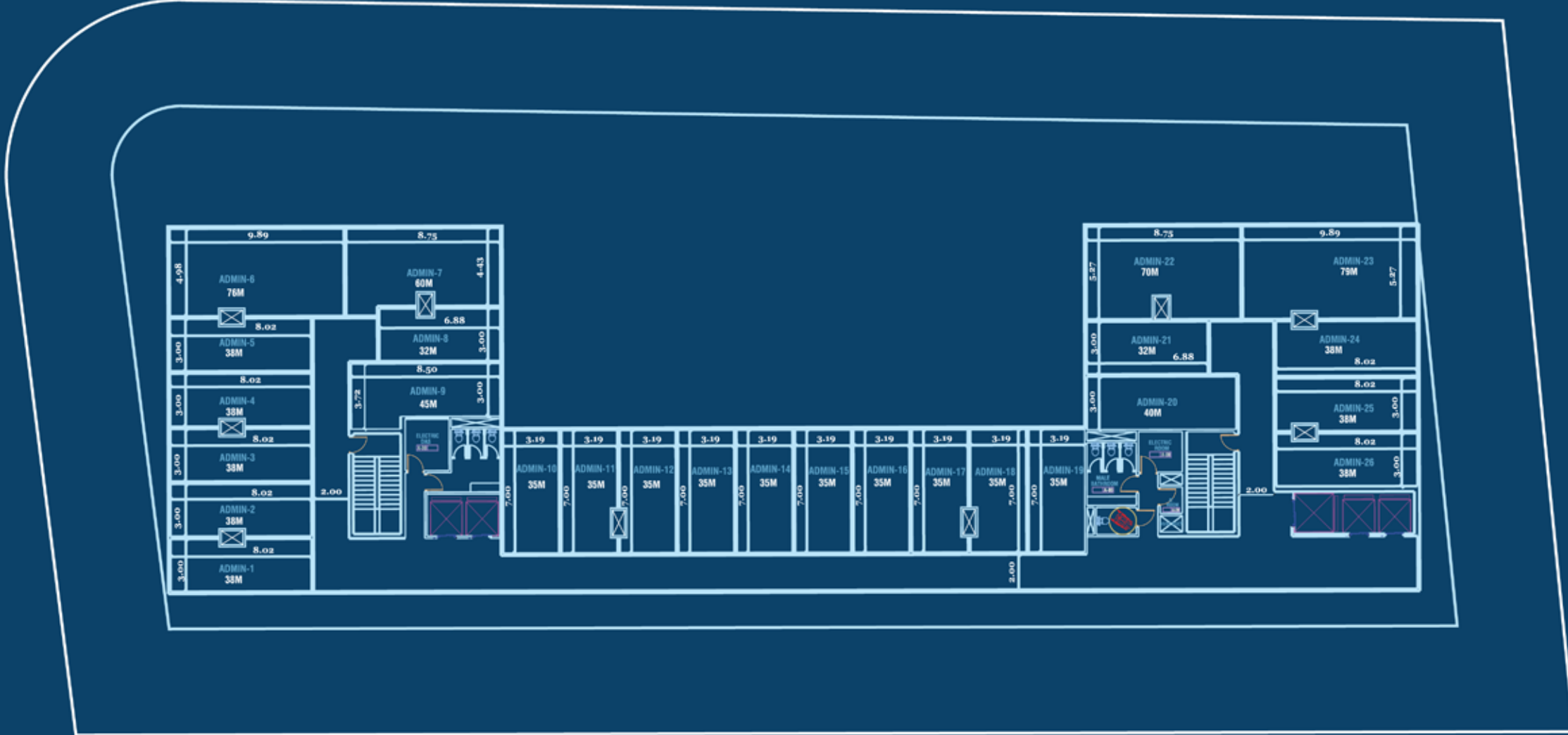
**ADMINISTRATIVE** ■



ADMINISTRATIVE ADMINISTRATIVE ADMINISTRATIVE ADMINISTRATIVE ADMINISTRATIVE ADMINISTRATIVE ADMINISTRATIVE ADM



5th To 11th FLOOR



12th To 13th FLOOR





**FACILITIES  
& AMENITIES.**





**FIRE FIGHTING SYSTEM**



**3 UNDERGROUND PARKING LEVELS**



**5 HIGH SPEED ELEVATOR**



**SOLAR ENERGY**



**SECURITY**



**VALET**



**AIR FOOD COURT**



**SKY LOUNGE**



**relating to  
development and  
progression**





DEVELOPED BY

**NTG** NEW TOWN  
GROUP.

**15893**

[info@ntg-development.com](mailto:info@ntg-development.com)

3rd floor, 340A, 3rd sector, south teseen, 5th settlement

**new point**

**of view**

